

# 7

## **Proven AI-Xcelerators For Digital Transformation**

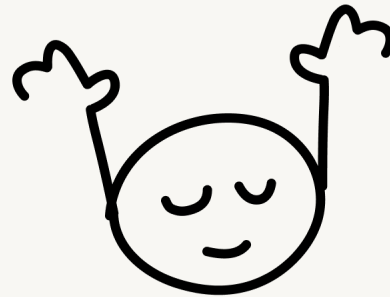
---

*mobile***LIVE**

**Which phase of the software development life cycle do you find the most challenging or problematic?**

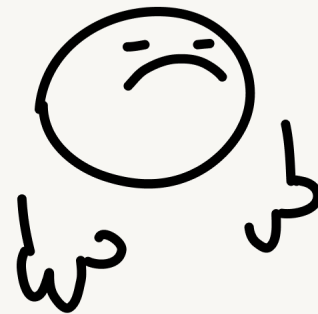
# One year

## Estimate



Reality

Three years



The Standish Group's Chaos Report states that

**only 29% of IT projects**

are completed on time and within budget .

According to a report by CodeSignal, developers spend an

**average of 19% of their time**

(about 7.6 hours per week) searching for and recreating lost or missing documentation.

Gartner reported that,

**90% of current applications**

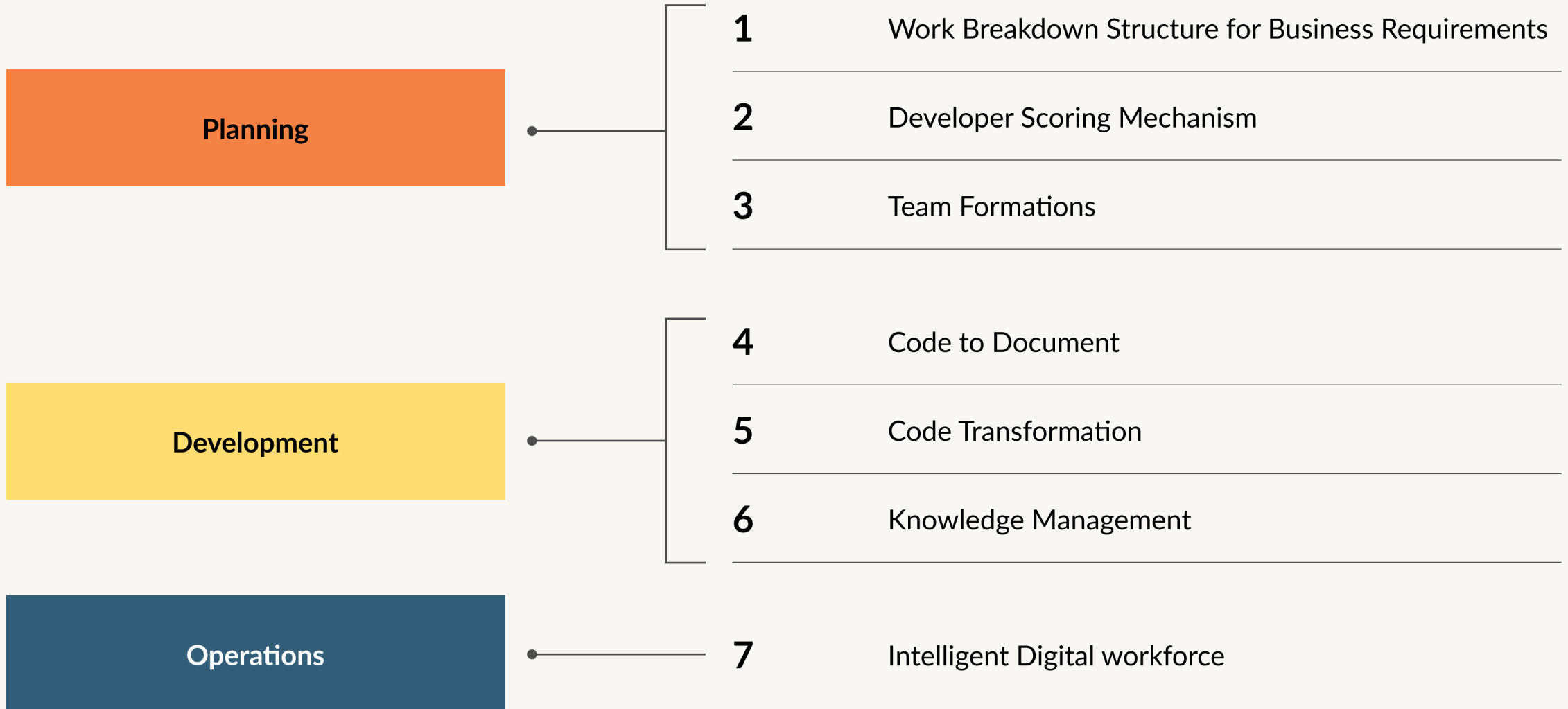
will still be in use, but most will have received insufficient modernisation, highlighting the ongoing struggle to update legacy systems effectively.

# AI-Xcelerators

---



# 7 Accelerators



Planning

Planning



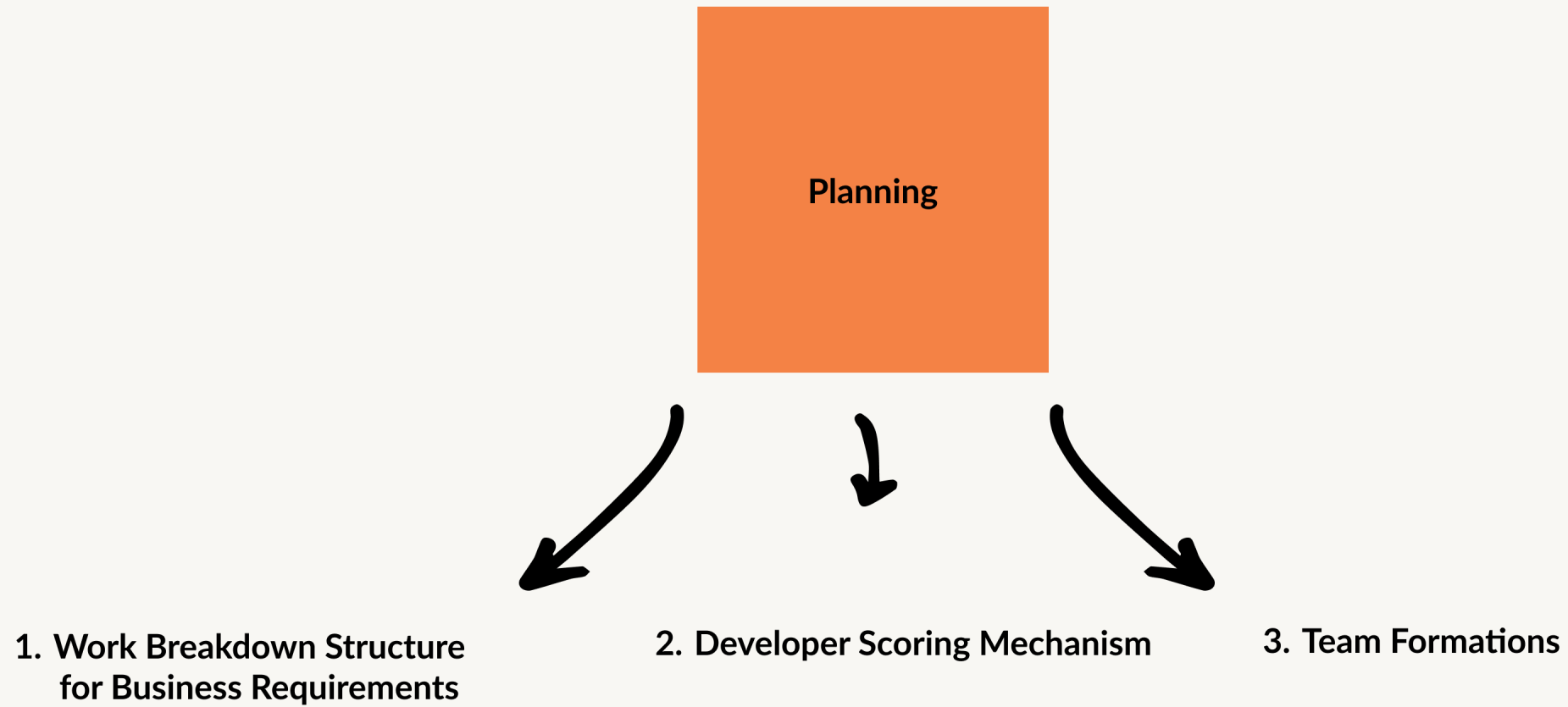
1. Work Breakdown Structure for Business Requirements

Planning



1. Work Breakdown Structure  
for Business Requirements

2. Developer Scoring Mechanism



**1. Work Breakdown Structure for Business Requirements****2. Developer Scoring Mechanism****3. Team Formations****Data Points**

Historical Business Requirement Documents

Historical Work Breakdown Structures

Historical Project Tasks and Efforts

Jira GitHub SonarQube Activity Logs

GitHub and Jira Reviews

Position and Grading

Developer Capacity and Capability Scoring

Position and Grading

Project type and complexity level

**Tech Used**

NLP and LLM/GenAI Models

Vector Databases and Vector Embeddings

Categorization Machine Learning Models

Predictive Machine Learning Models

LangChain

LLM/GenAI Models

Predictive Machine Learning Models

LangChain

Optimization Algorithms

Predictive Machine Learning Models

Vector Operations

LangChain

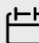


**John Smith**  
Project Manager

 Notifications

3

 Profile

 Estima App

 My Team

 Settings

 Help Center

# Estima App

1 Document Upload

## Document Upload

No file chosen

Select file



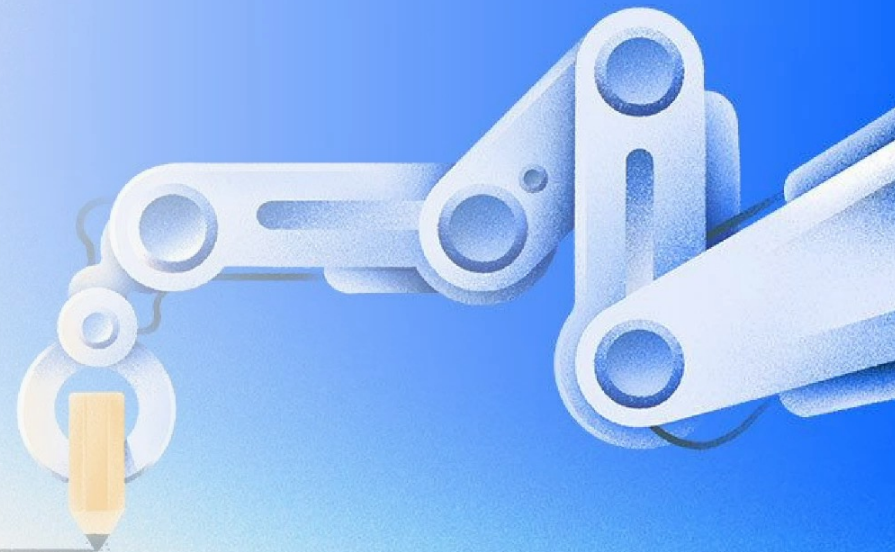
Next →

2 Work Breakdown Structure

3 Team Recommendations

4 Gantt Chart

# Optimize Your Team's Performance



## Grading scale



## Developer board



**George Costanza**

Backend Engineer  
george.costanza@gmail.com

Details ▾



**Awais Haider**

Backend Engineer  
Awaishaider@gmail.com

Details ▾





John Smith

Project Manager

 Notifications

3

 Profile

 Estima App

 My Team

 Settings

 Help Center

# Estima App

1 Document Upload

2 Work Breakdown Structure

 Back

Next 

## Work Breakdown Structure

Download

Level		Phase	Epics	User Story	Efforts (Days)
1	1.1	ANALYSIS	External Interface Requirements	Define and document external interfaces for system integration	3
1	1.2	ANALYSIS	Search Article Functionality	Analyze requirements for the search article functionality, including search by author, category, and keyword	2
1	1.3	ANALYSIS	Communication Features	Identify communication protocols and interfaces for user interactions within the system	4
1	1.4	ANALYSIS	Author Management	Define requirements for adding, managing, and representing authors within the system	3
1	1.5	ANALYSIS	Article Submission and Review Process	Detail the article submission process, including review and approval workflows	5
1	1.6	ANALYSIS	Data Structure and Storage	Analyze and specify the logical structure of data, including relational schemas for database management	4
1	1.7	ANALYSIS	Security Requirements	Specify security requirements, including data protection and access control mechanisms	5
1	1.8	ANALYSIS	User Interface Design	Outline specifications for user interface screens, ensuring usability and accessibility	6

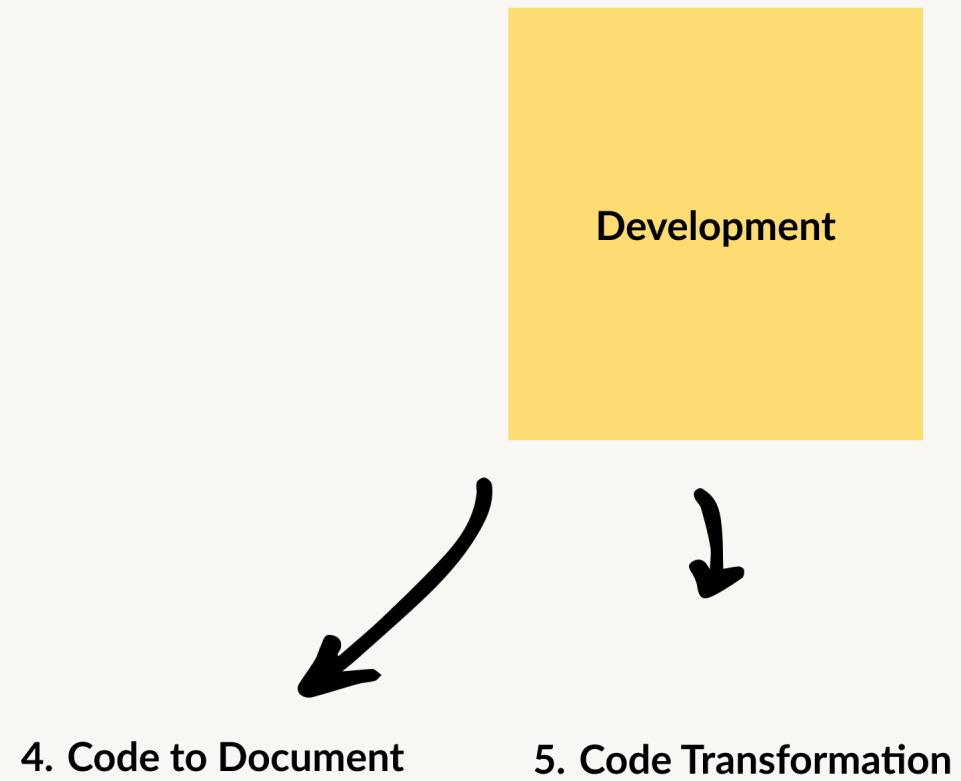
3 Team Recommendations

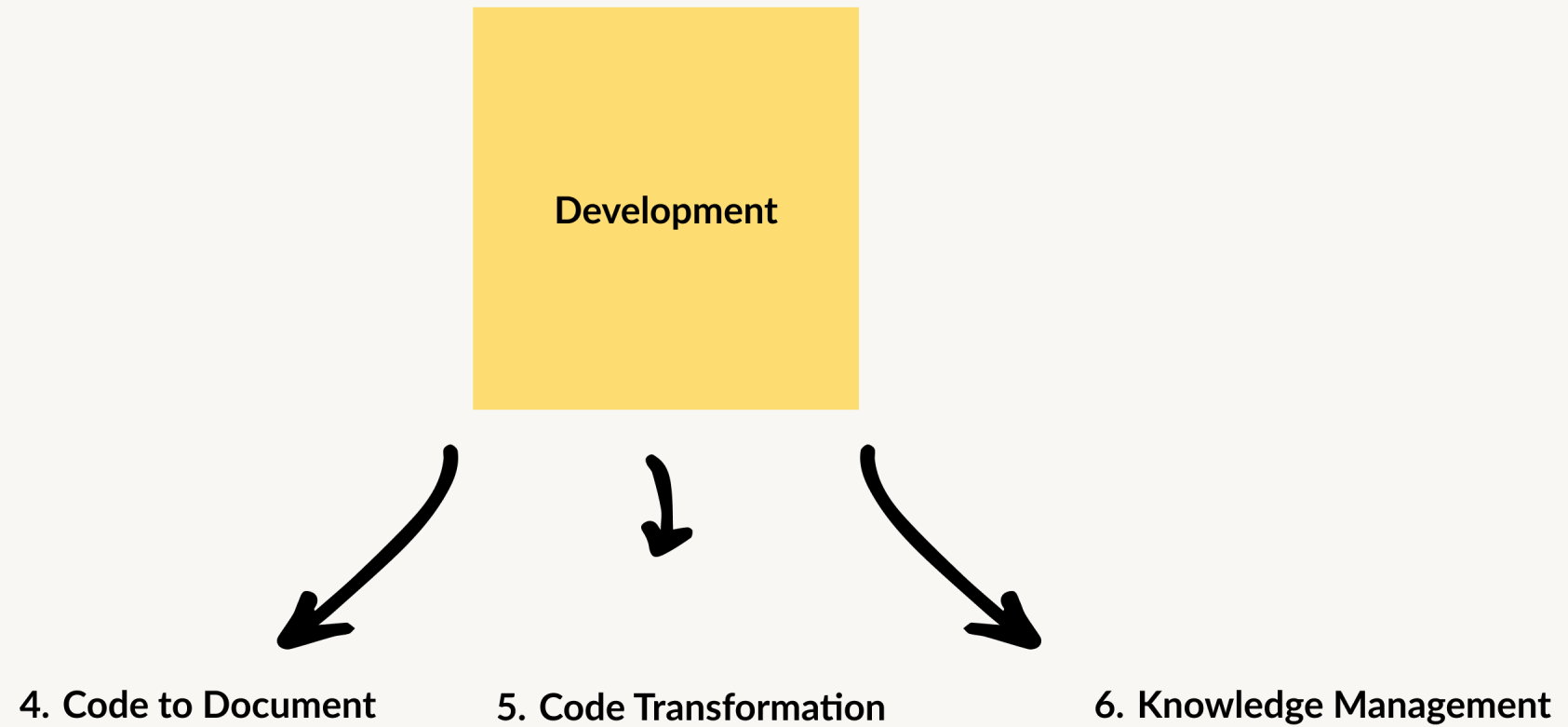
Development

Development



4. Code to Document





**4. Code to Documentation****Data Points**

Historical code and associated documentation Guidelines

**5. Code Transformation**

Historical legacy and transformed code

**6. Knowledge Management**

Existing Organization Documentation (words, excels, pdfs etc...)

Organization DB level data entities (tables)

API Calls

**Tech Used**

LLM Models (open source local or cloud)

GenAI Models (open source local or cloud)

Fine Tuning Techniques

Advanced Prompt Engineering Techniques

Diagram Creation Tools

LangChain

LLM Models (open source local or cloud)

GenAI Models

Fine Tuning Techniques

Advanced Prompt Engineering Techniques

LangChain

RAG Approach with vector DB and vectorization

GenAI Models (local or open source)

Fine Tuning Techniques

Advanced Prompt Engineering Techniques

LangChain



John Smith  
Tech Lead



Notifications

3



Profile



Code to Doc

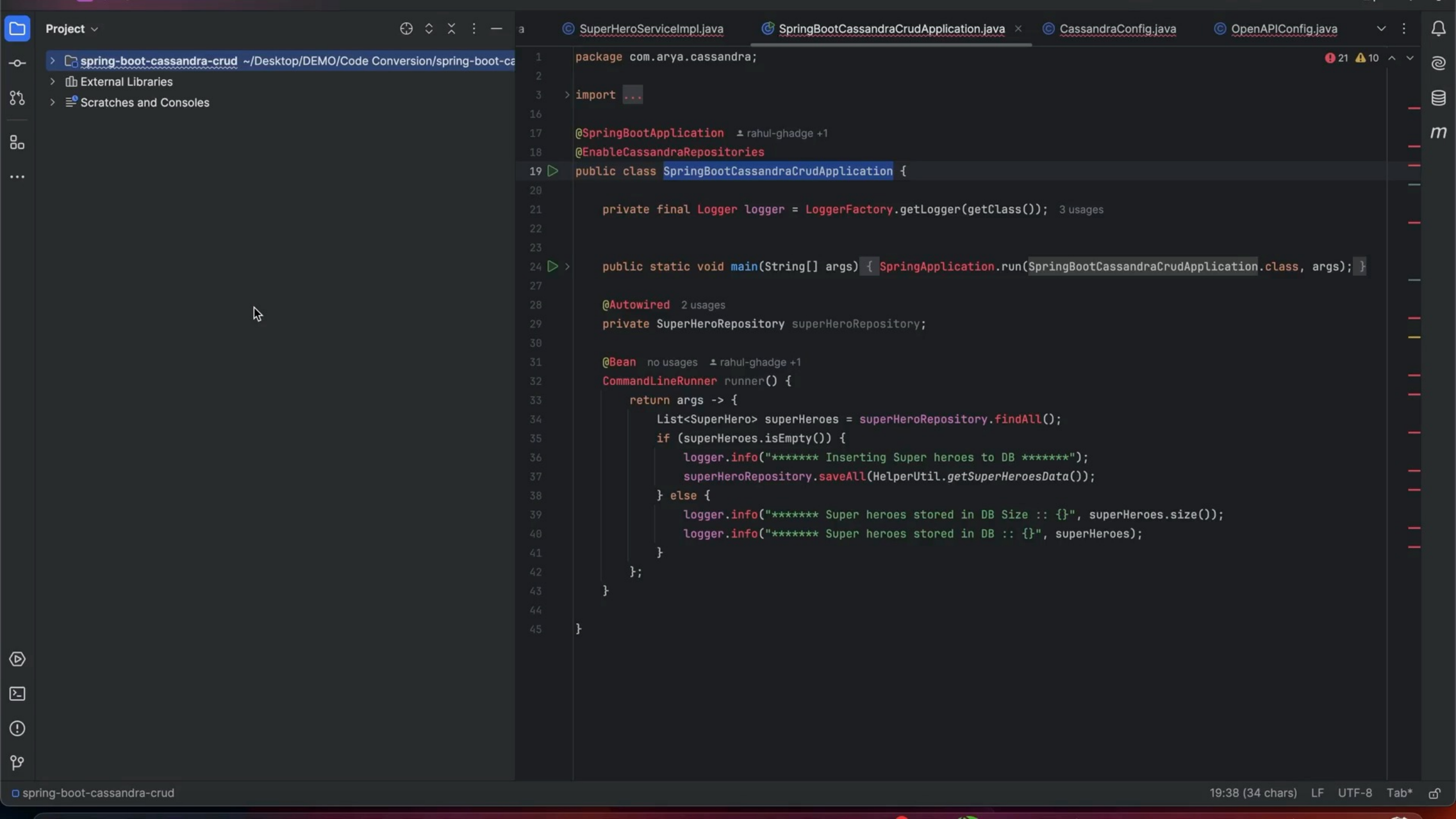


Code Transformation



Knowledge Management

Get Started Now!







John Smith

Tech Lead




Notifications

3



Profile



Code to Doc



Code Transformation



Knowledge Management



Message Donna



Operations

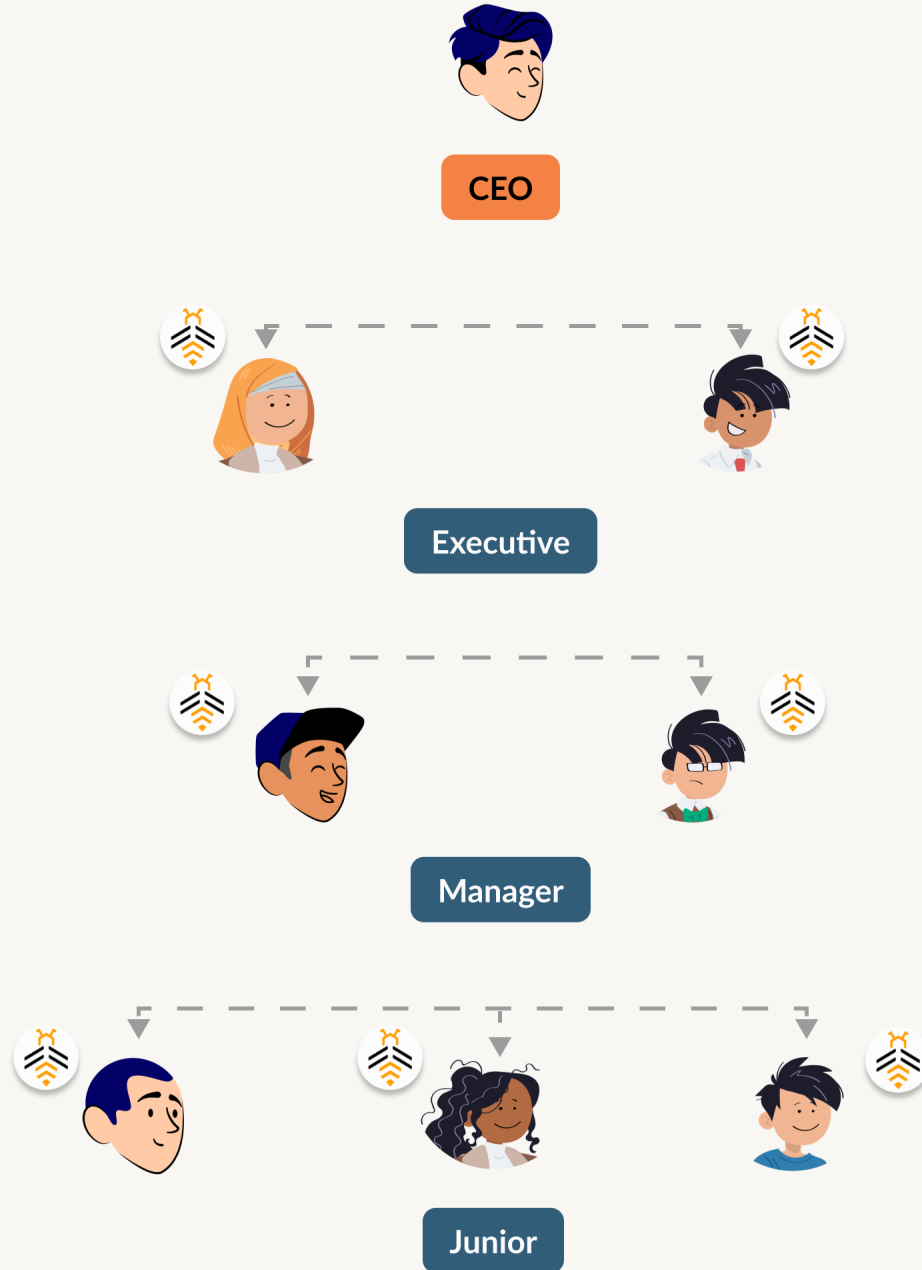


Operations

7. Intelligent Digital workforce

Future

mobileLIVE



Input

Output

Intelligent  
Decision



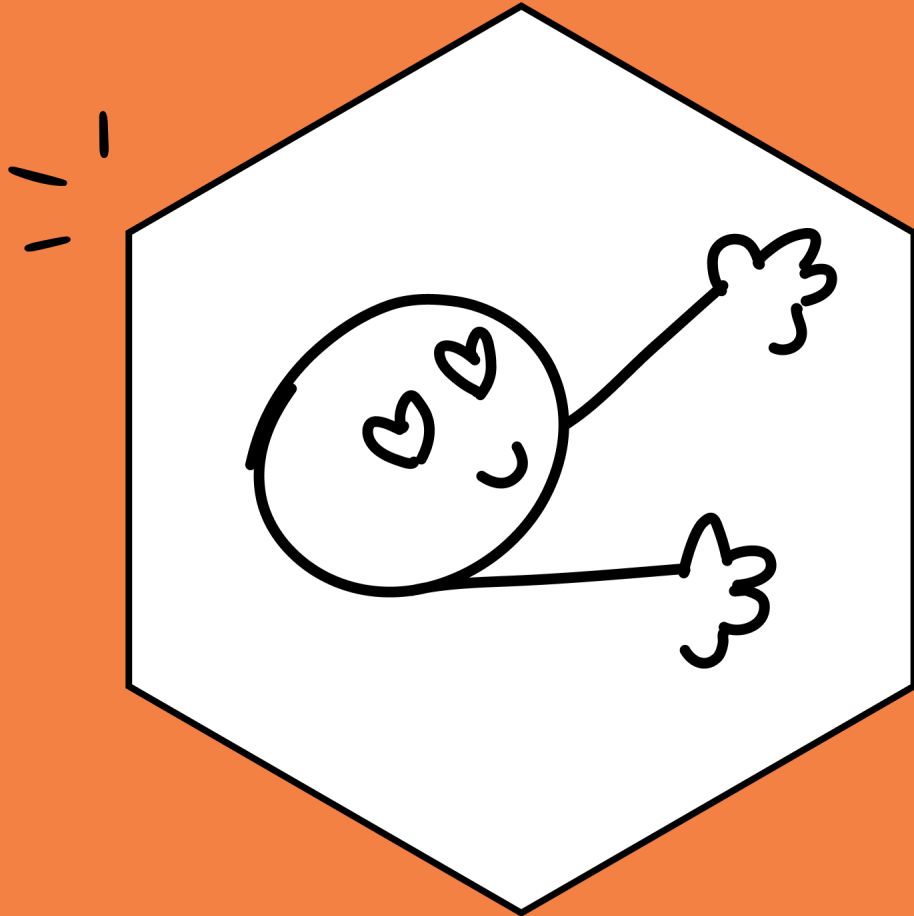
Windows Explorer window showing the contents of a folder named "Sharepoint" on a network drive. The left sidebar shows the navigation pane with "Sharepoint" selected. The main pane displays a list of files and folders, including "Documents", "Pictures", "Videos", "Music", "Downloads", "Desktop", "This PC", and "Network". The "Sharepoint" folder is expanded, showing a list of files and folders. The "Documents" folder is highlighted. The "Documents" folder contains files such as "Documents", "Pictures", "Videos", "Music", "Downloads", "Desktop", "This PC", and "Network". The "Documents" folder is expanded, showing a list of files and folders. The "Documents" folder is highlighted. The "Documents" folder contains files such as "Documents", "Pictures", "Videos", "Music", "Downloads", "Desktop", "This PC", and "Network".

Name	Date modified	Type	Size
Documents	2/14/2017 2:00 PM	File folder	
Pictures	2/14/2017 2:00 PM	File folder	
Videos	2/14/2017 2:00 PM	File folder	
Music	2/14/2017 2:00 PM	File folder	
Downloads	2/14/2017 2:00 PM	File folder	
Desktop	2/14/2017 2:00 PM	File folder	
This PC	2/14/2017 2:00 PM	File folder	
Network	2/14/2017 2:00 PM	File folder	
Documents	2/14/2017 2:00 PM	File folder	
Pictures	2/14/2017 2:00 PM	File folder	
Videos	2/14/2017 2:00 PM	File folder	
Music	2/14/2017 2:00 PM	File folder	
Downloads	2/14/2017 2:00 PM	File folder	
Desktop	2/14/2017 2:00 PM	File folder	
This PC	2/14/2017 2:00 PM	File folder	
Network	2/14/2017 2:00 PM	File folder	
Documents	2/14/2017 2:00 PM	File folder	
Pictures	2/14/2017 2:00 PM	File folder	
Videos	2/14/2017 2:00 PM	File folder	
Music	2/14/2017 2:00 PM	File folder	
Downloads	2/14/2017 2:00 PM	File folder	
Desktop	2/14/2017 2:00 PM	File folder	
This PC	2/14/2017 2:00 PM	File folder	
Network	2/14/2017 2:00 PM	File folder	

Confidential & Private Information - Blurred Intentionally



# Embrace The Future Of How We Work



mobile*LIVE*

# Thank You!

Scan the QR Code